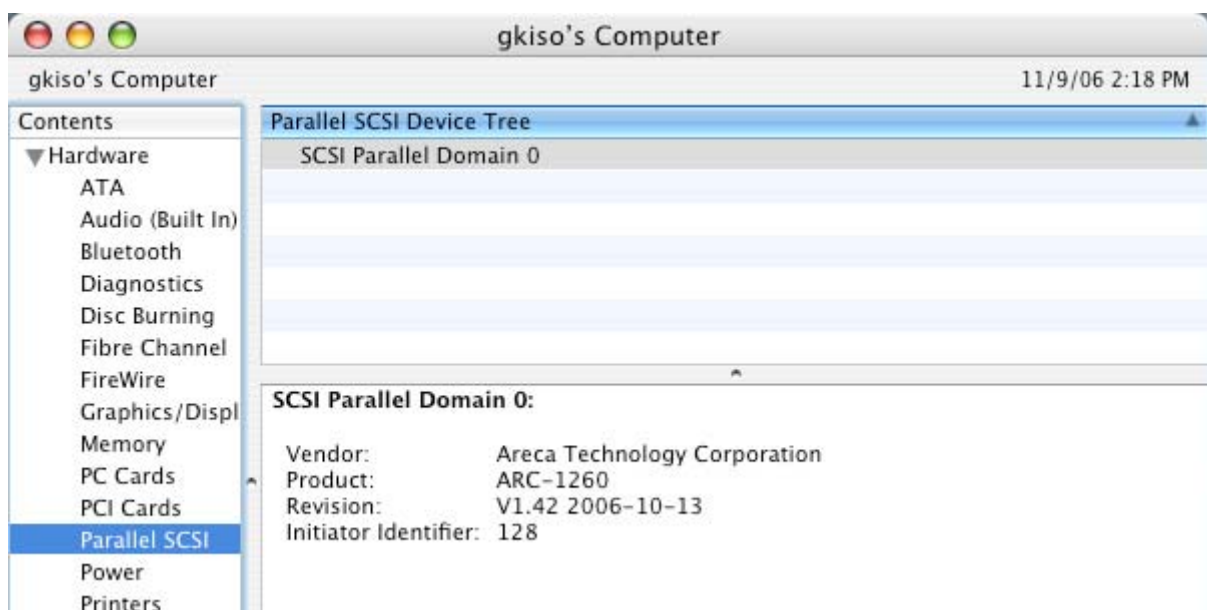
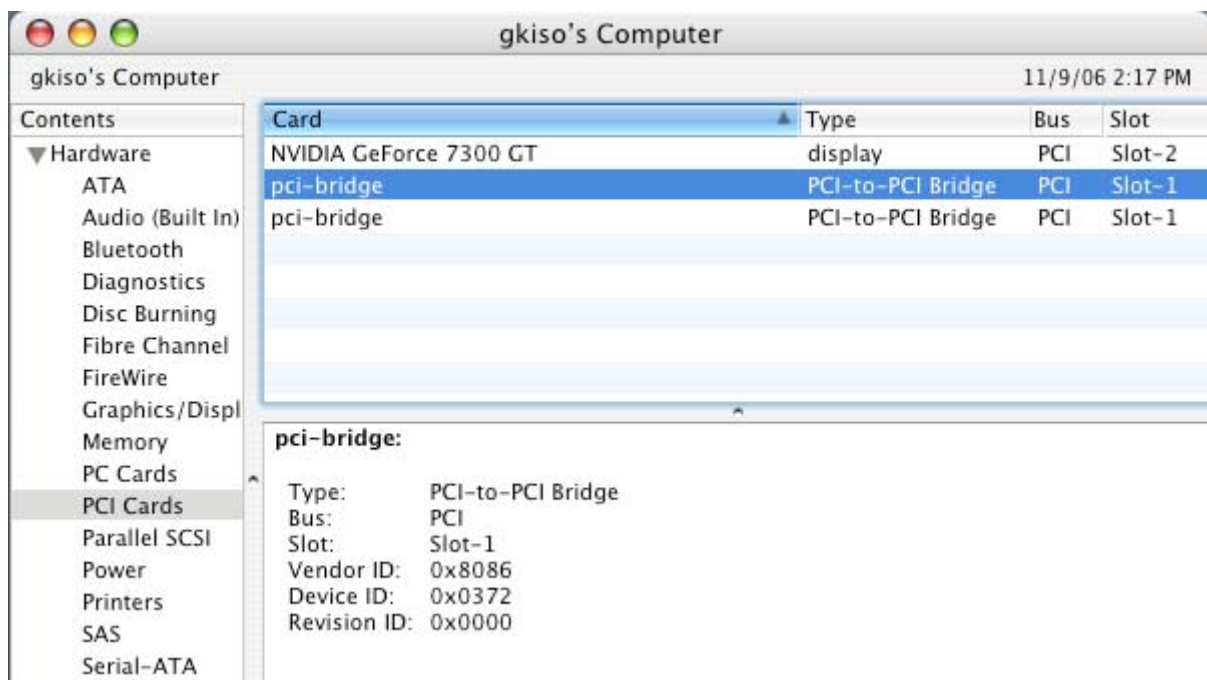


To Configure RAID in Mac OSX,

After hardware installation, the SATA disk drives connected to the SATA RAID controller must be configured and the volume set units initialized before they are ready to use.

The Mac driver was installed by running (double-click on ArcMSR-1.3.1.pkg icon) ArcMSR-1.3.1.pkg from the Desktop. Installation successful and card recognized in system profiler.



The McRAID manager interface can be accessed through the built-in configuration and administration utility that resides in the controller's firmware. It provides complete control and management of the controller and disk arrays, eliminating the need for additional hardware or software.

The ArchHttp proxy server is provided on the CD-ROM delivered with SATA card or download from the www.areca.com.tw. The firmware embedded McRAID storage manager can configure and monitor the SATA RAID controller via ArchHttp Proxy Server.

1. Login as root. Copy the ArchHttp file to a local directory.

- (1). Insert the SATA RAID controller CD in the CD-ROM drive.

- (2). Copy <CD-ROM>\PACKAGES\Mac\http directory to local.

Or

- (1). Download from the www.areca.com.tw or from the email attachment.

2. You must have administrative level permissions to install SATA RAID controller ArchHttp software. This procedure assumes that the SATA RAID hardware and Mac driver are installed and operational in your system. The following details are the installation procedure of the SATA RAID controller Mac ArchHttp software.

- (1).Run the archhttp64 using Terminal.app by using the following command:

Usage: sudo ./archhttp64 (TCP_PORT).

Parameters: TCP_PORT value=1~65535 (If TCP_PORT assigned, Archhttp will start from this port. Otherwise, it will use the setting in the archhttpsrv.conf or default 81). This is the port address assigning for the first adapter.

Such as: sudo ./archhttp64 1553

- (2). Archhttp server console started, Controller card detected then ArchHttp proxy server screen appears.

```
Terminal — archhttp64 — 97x33
Copyright (c) 2004 Areca, Inc. All Rights Reserved.
Areca HTTP proxy server V1.80.220 for Areca RAID controllers.

Controller(s) list
-----
Controller[1](PCI) : Listen to port[1553].
Cfg Assistant : Listen to port[1554].
Binding IP: [192.168.3.6]
Note: IP[0.0.0.0] stands for any ip bound to this host.
-----

#####
Press CTRL-C to exit program!!
#####
Controller[1] HTTP: New client [9] accepted
Controller[1] HTTP: Recv 243 bytes
Controller[1] HTTP: Send [174] bytes back to the client
Controller[1] HTTP: New client [9] accepted
Controller[1] HTTP: Recv 469 bytes
Controller[1] HTTP: Send [650] bytes back to the client
Controller[1] HTTP: New client [9] accepted
Controller[1] HTTP: Recv 522 bytes
Controller[1] HTTP: Send [586] bytes back to the client
Controller[1] HTTP: New client [9] accepted
Controller[1] HTTP: Recv 528 bytes
Controller[1] HTTP: Send [3269] bytes back to the client
Controller[1] HTTP: New client [9] accepted
Controller[1] HTTP: Recv 491 bytes
Controller[1] HTTP: Send [559] bytes back to the client
Controller[1] HTTP: New client [9] accepted
Controller[1] HTTP: Recv 520 bytes
Controller[1] HTTP: Send [3709] bytes back to the client
Controller[1] HTTP: New client [9] accepted
```

3. Start-up McRAID Storage Manager

With the McRAID Storage Manager, you can locally manage a system containing a SATA RAID controller that has Mac and a supported browser. A locally managed system requires all of the following components:

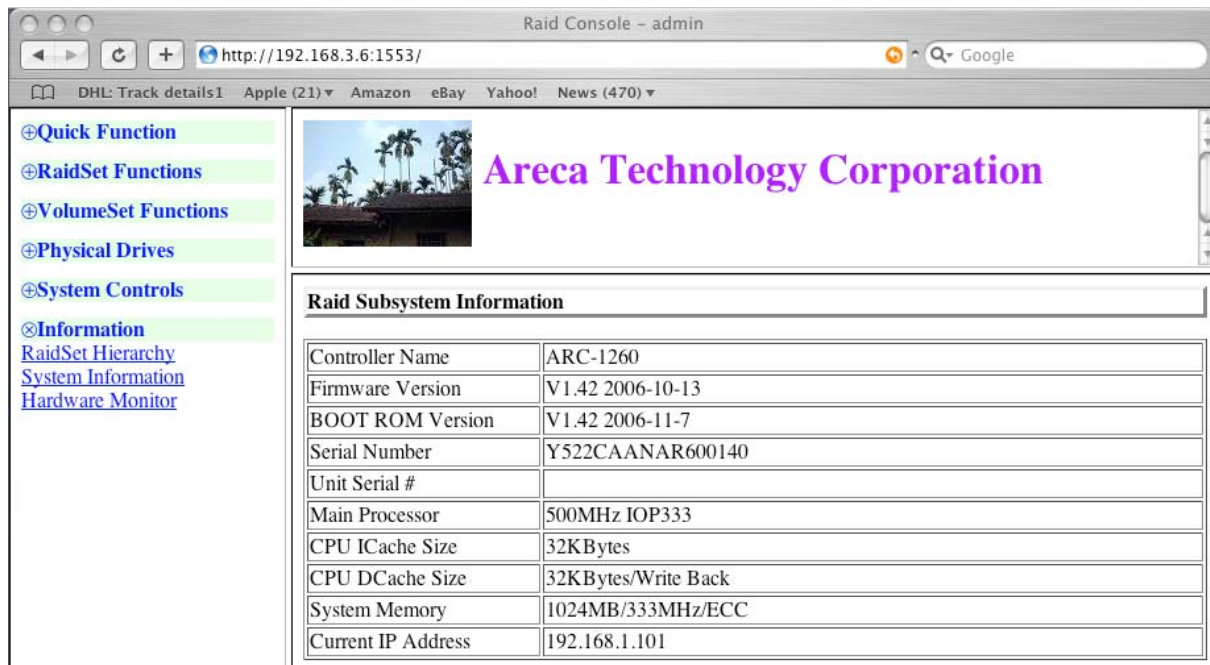
- (1). A supported Web browser (In Safari browser for OSX), which should already be installed on the system.
- (2). Install ArchHttp proxy server on the SATA RAID system.

To configure the PCI-X/PCIe SATA RAID controller, you need to know its IP Address. Launch your McRAID Storage Manager by entering `http://[Computer IP Address]:[port number]` in the web browser. Such as type `http://localhost:1553` in browser

- (2). When connection is established, the System Login screen appears.

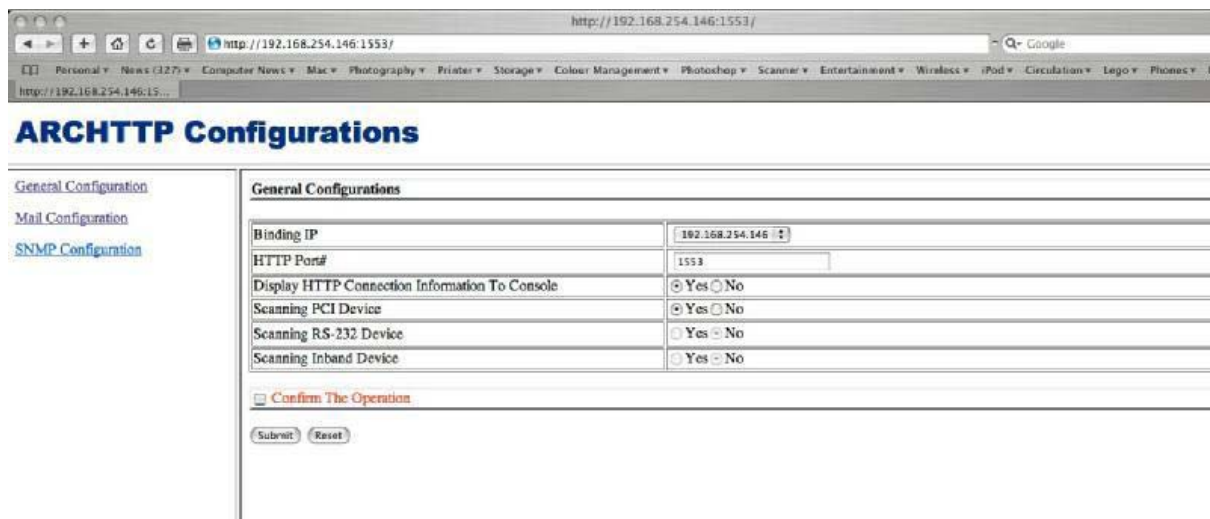
The SATA RAID controller default User Name is :admin and the Password is :0000

Now the RAID setup should be connected. McRAID Storage Manager webpage appears:



4. If you want to change the "archhttpsrv.conf" setting up of ArchHttp configuration, For example: General configuration, Mail Configuration, and SNMP Configuration, Please start Safari Browser `http:\\localhost: Cfg Assistant`. Such as `http:\\localhost: 1554`.

The ArchHttp configuration starts



Configure General Configuration and submit. After ArchHttp has successfully submitted, the Archhttp console restarts.